

1) Potentiometer, 2) LED function indicator



Basic features

Approval/Conformity	CE UKCA cULus WEEE
Basic standard	IEC 60947-5-2
Scope of delivery	Screwdriver Holder Short guide
Sensitivity	Switching distance adjustable
Series	R08

Electrical data

No-load current I_0 max. at U_e	10 mA
Operating voltage U_b	12...30 VDC
Rated insulation voltage U_i	75 V DC
Rated operating current I_e	50 mA
Rated operating voltage U_e DC	24 V
Ready delay t_v max.	100 ms
Ripple max. (% of U_e)	10 %
Switching frequency	100 Hz
Utilization category	DC -13
Voltage drop static max.	1.5 V

Display/Operation

Function indicator	yes
---------------------------	-----

Electrical connection

Cable diameter D	3.0 mm
Cable length L	2 m
Conductor cross-section	0.14 mm ²
Number of conductors	3
Polarity reversal protected	yes
Protection against device mix-ups	yes
Short-circuit protection	yes

Environmental conditions

Ambient temperature	-30...70 °C
Contamination scale	1
IP rating	IP67

Functional safety

MTTF (40 °C)	680 a
---------------------	-------

Interface

Switching output	PNP normally open (NO)
-------------------------	------------------------

Material

Cover material	PP
Housing material	PP
Material jacket	PUR
Material sensing surface	PP

Capacitive Sensors
BCS R08RR01-PSM80C-EP02
Order Code: BCS0051



Mechanical data

Dimension	34 x 16 x 8 mm
Installation	for flush mounting

Range/Distance

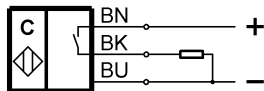
Hysteresis H max. (% of Sr)	15.0 %
Measuring range	1...8 mm
Rated operating distance S _n	8 mm
Repeat accuracy max. (% of Sr)	5.0 %
Temperature drift max. (% of Sr)	20 %

Remarks

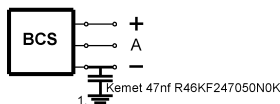
The potentiometer does not have a fixed stop, but can be turned endlessly without destroying anything.
 If no change in the switching signal is detected, the potentiometer should be turned forwards or backwards until a signal change occurs at the output.
 For more information about MTTF and B10d see MTTF / B10d Certificate

Indication of the MTTF- / B10d value does not represent a binding composition and/or life expectancy assurance; these are simply experiential values with no warranty implications. These declared values also do not extend the expiration period for defect claims or affect it in any way.

Wiring Diagrams



Installation remarks



1) Machine GND